

HEIGHT 6' 2" SUIT 40 R SHIRT 15X34 WAIST 34" INSEAM 34" HAIR BLONDE
EYES BLUE-GREEN SHOES 12 LOCATION LOCAL



HEIGHT 6' 2" SUIT 40 R SHIRT 15X34 WAIST 34" INSEAM 34" HAIR BLONDE
EYES BLUE-GREEN SHOES 12 LOCATION LOCAL



HEIGHT 6' 2" SUIT 40 R SHIRT 15X34 WAIST 34" INSEAM 34" HAIR BLONDE
EYES BLUE-GREEN SHOES 12 LOCATION LOCAL

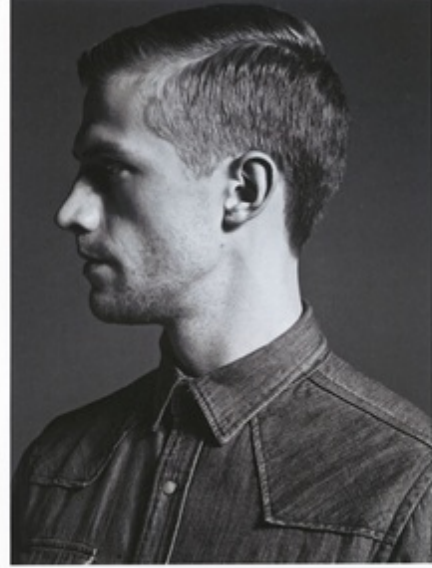


HEIGHT 6' 2" SUIT 40 R SHIRT 15X34 WAIST 34" INSEAM 34" HAIR BLONDE
EYES BLUE-GREEN SHOES 12 LOCATION LOCAL



MP by Massimo Piombo

Founded by Mr Massimo Piombo in the late 1980s, this Milanese label has been on the radar of Italy's style cognoscenti for some time, and is now available on MR PORTER. Piombo's collection of relaxed, timeless formalwear is created from a range of artisanal



Maison Kitsuné

Kitsuné was a record label founded in 2002 by Mr Gildas Loaëc and Mr Masaya Kuroki, before the pair branched out into fashion. Characterised by a stylish, contemporary aesthetic, Kitsuné's collections are expertly cut and make use of the finest

